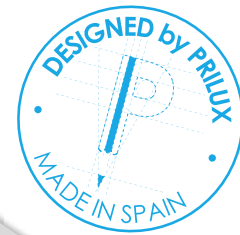
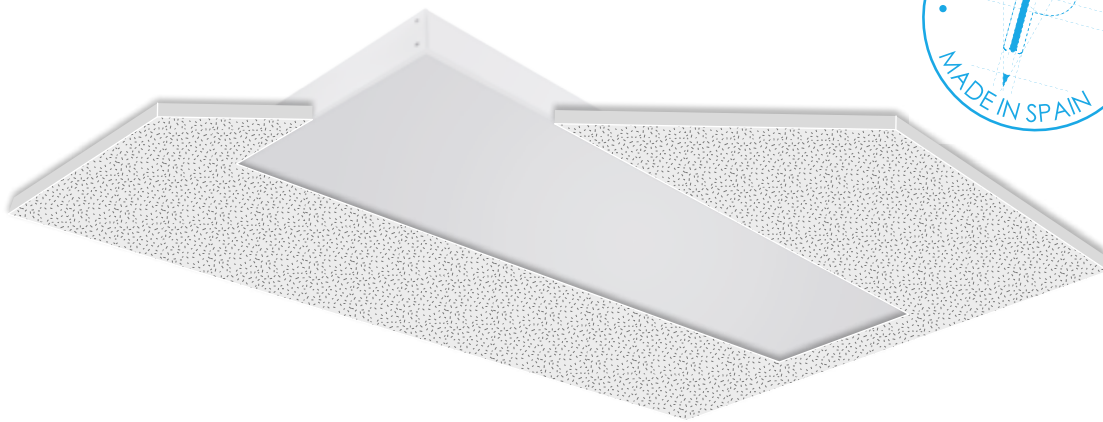
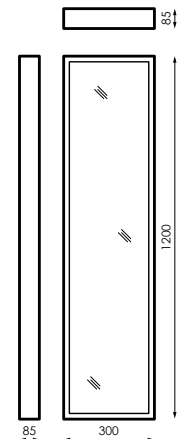


**SILENT LED II**  
LARGE



CÓDIGO	P <sub>LED</sub>	P <sub>LUMINARIA</sub>	I	Cosφ	Φ <sub>LED</sub>	Φ <sub>LUMINARIA</sub>	T <sub>c</sub>	Nº LEDs	DIFUSOR
195522	4 x 9.8W	41W	300mA	0.94	5.800lm	4.442lm	3.000K	264	S
164993	4 x 9.8W	41W	300mA	0.94	6.000lm	4.666lm	4.000K	264	S
195546	4 x 11.6W	50W	350mA	0.91	6.400lm	5.058lm	3.000K	264	S
195584	4 x 11.6W	50W	350mA	0.91	6.800lm	5.313lm	4.000K	264	S



POTENCIA: **Ver tabla**  
TENSIÓN: **230V ac**  
FRECUENCIA: **50Hz**  
INTENSIDAD: **Ver tabla**  
Cosφ: **Ver tabla**  
CLASE: **I**  
IP LUMINARIA: **20**  
FLUJO LED (Tj25) (φ): **Ver tabla**  
FLUJO EMITIDO LUMINARIA (φ): **Ver tabla**  
TEMPERATURA DE COLOR: **Ver tabla**  
Ra: **>80**  
LÁMPARA: **Módulos LED**  
MÓDULO: **Prilux**  
Nº LEDs: **264LEDs**  
HORAS DE VIDA: **L70:50.000h**  
COLOR: **Blanco**  
DIMENSIONES: **1.200 x 300 x 85mm**  
CUERPO: **Acero**  
DIFUSOR: **PMMA satinado**  
POSICIÓN DE MONTAJE: **Empotrable**  
**(Mediante accesorio para**  
**escayola) y techo Armstrong**

POWER: **See table**  
VOLTAGE: **230V ac**  
FREQUENCY: **50Hz**  
CURRENT: **See table**  
Cosφ: **See table**  
CLASS: **I**  
IP LUMINARY: **20**  
LED FLUX (Tj25) (φ): **See table**  
LUMINARY EMITTED FLUX (φ): **See table**  
COLOUR TEMPERATURE: **See table**  
Ra: **>80**  
LAMP: **LED modules**  
MODULE: **Prilux**  
NUMBER OF CHIPS: **264LEDs**  
LIFETIME: **L70:50.000h**  
COLOUR: **White**  
MEASURES: **1.200 x 300 x 85mm**  
BODY: **Steel**  
DIFFUSER: **Satin PMMA**  
MOUNTING POSITION: **Recessed (By**  
**accessory for plaster ceilings) and ceiling**  
**Armstrong**

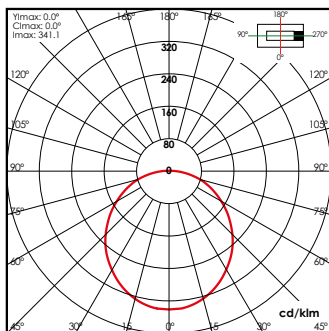
PUISSANCE LAMPE: **Voir tableau**  
TENSION D'ALIMENTATION: **230V ac**  
FRÉQUENCE: **50Hz**  
INTENSITÉ: **Voir tableau**  
Cosφ: **Voir tableau**  
CLASSE ÉLECTRIQUE: **I**  
IP LUMINAIRE: **20**  
FLUX LED (Tj25) (φ): **Voir tableau**  
FLUX ÉMIS LUMINAIRE (φ): **Voir tableau**  
TEMPÉRATURE DE COULEUR: **Voir tableau**  
Ra: **>80**  
LAMPE: **Modules LED**  
MODULE: **Prilux**  
NOMBRE DE PUCE: **264LEDs**  
HEURES DE VIE: **L70:50.000h**  
COULEUR: **Blanc**  
DIMENSIONS: **1.200 x 300 x 85mm**  
CORPS: **Acier**  
DIFFUSEUR: **PMMA satin**  
POSITION DE MONTAGE: **Encastré (Par**  
**accessoire pour plafonds de plâtre) et**  
**plafond Armstrong**

POTÊNCIA: **Ver tabela**  
TENSÃO: **230V ac**  
FREQUÊNCIA: **50Hz**  
INTENSIDADE: **Ver tabela**  
Cosφ: **Ver tabla**  
CLASSE: **I**  
IP LUMINÁRIA: **20**  
FLUXO LED (Tj25) (φ): **Ver tabela**  
FLUXO EMITIDO LUMINÁRIA (φ): **Ver tabela**  
TEMPERATURA DE COR: **Ver tabela**  
Ra: **>80**  
LÂMPADA: **Módulos LED**  
MÓDULO: **Prilux**  
Nº LEDs: **264LEDs**  
HORAS DE VIDA: **L70:50.000h**  
COR: **Branco**  
DIMENSÃO: **1.200 x 300 x 85mm**  
CORPO: **Acço**  
DIFUSOR: **PMMA cetim**  
POSICÃO DE MONTAGEM: **Encastrar (Por**  
**acessório para tetos de gesso) e teto**  
**Armstrong**

## SILENT LED II LARGE



### FOTOMETRÍA/PHOTOMETRY/PHOTOMÉTRIE/FOTOMETRIA

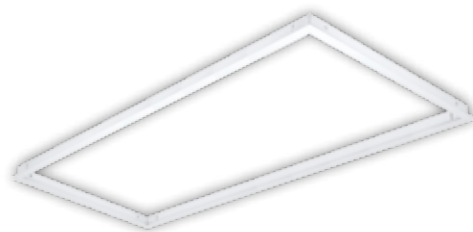


Silent LED II S

### ACCESORIOS/ ACCESSORIES/ ACCESSOIRES/ACESSÓRIOS

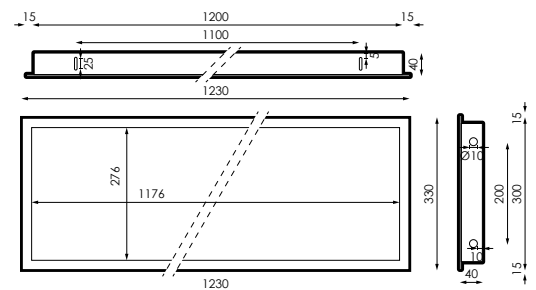


Difusor satinado (S)  
Satin diffuser (S)  
Diffuseur satin (S)  
Difusor cetim (S)



**207591**

Marco empotrar techo escayola 1200 x 300mm  
Frame recessed ceiling plaster 1200 x 300mm  
Cadre encastré plafond en plâtre 1200 x 300mm  
Quadro rebaixado gesso teto 1200 x 300mm



### BAJO PEDIDO/ON REQUEST/SUR COMMANDE/SOB PEDIDO

- N**
- Regulación 1-10V, DALI.
  - Temperaturas de color en 5.000K.
  - Kit de emergencia.

- E**
- 1-10V, DALI dimming.
  - 5.000K colour temperature.
  - Emergency kit.

- F**
- Régulation 1-10V, DALI.
  - Températures de couleur dans 5.000K.
  - Kit d'urgence.

- P**
- Regulação 1-10V, DALI.
  - Temperaturas de cor 5.000K.
  - Kit de Emergência.